

/2020 ANNUAL REPORT

A YEAR OF
ADAPTABILITY & SUSTAINABILITY



OPENING /LETTER

We would like to invite you all to take a few minutes to look back at the last 15 months of your lives. Those weren't normal months, even for the oldest among us; no one ever lived or felt the way we did since October 2019.

For many there was hope, optimism, faith, plans, better future, for others despair, depression, trauma and suffering.

Whatever it was, it was one mighty rollercoaster but we all made it until now in one piece.

We would like to take this opportunity to thank our partners and supporters and tell them how grateful we are for them supporting our cause throughout these difficult times, without which we would not have been able to continue serving while everything else was collapsing around us.

Most importantly we are grateful for our team with all its weaknesses, its strengths, its energy, its patience and for everything this team gave despite what they went through.

2020 was definitely not an easy year worldwide, but looking back, we need to tell each one of you: Be proud of how you handled life since October 2019.

Be proud that you still had creativity to come up with ideas and energy to get out of bed in the morning.

Be proud that you were able to continue doing what you're doing even if differently.

Be proud that you are all still capable of giving.

We will keep supporting one another so that himaya can continue with its mission. It is the time to be thankful, to appreciate your achievements, but to keep looking forward as we still have a long road ahead.

Lama Yazbeck



THERE IS NO DOUBT THAT 2020 IS A YEAR THAT VERY FEW OF US WILL EVER FORGET. IT HAS BEEN A CHALLENGING AND DEMANDING YEAR FOR THE WHOLE WORLD AND MORE SPECIFICALLY, FOR LEBANON.

WE ARE VERY GRATEFUL FOR OUR TEAM AND FOR OUR PARTNERS AS WE COULD NOT IMAGINE PULLING THROUGH ALL THE HARDSHIPS, WITHOUT THEIR SUPPORT AND THAT OF OUR COMMUNITY.

THIS YEAR HAS CERTAINLY TESTED US ALL AND ON MANY LEVELS; WE HAD TO BE QUICK WITH OUR DECISIONS AND ACT AS FAST AS OUR CONTEXT WAS CHANGING. THIS MADE US RESPOND TO THE NEEDS OF OUR COMMUNITY DIFFERENTLY, AND WITH AGILITY AS WE DIVED INTO THE UNKNOWN WITH OUR MISSION AS OUR ONLY COMPASS.

THE HIDDEN LEARNINGS OF 2020 WERE OUR ABILITY **TO ADAPT** TO PURSUE OUR MISSION TO OFFER A SAFE AND DIGNIFIED ENVIRONMENT FOR EVERY CHILD AND HIS/HER FAMILY BY IMPLEMENTING **SUSTAINABLE INITIATIVES** WITH NATIONAL IMPACT.

INTRO

ADAPTABILITY



OUR RESPONSE TO THE FINANCIAL & HEALTH CRISIS

While our previous anniversaries gathered us all in one room, this year we've decided to celebrate differently. For our 12th birthday, we decided to launch a series of initiatives, to support the Lebanese community during these challenging times.

We distributed food boxes, vouchers and games to around 1,200 families all over Lebanon. We also distributed over 1,000 seed packs, to encourage children to start planting along with their parents, as this activity can be highly beneficial for their personal development.

Due to the financial crisis that Lebanon is currently facing, this initiative will help families get their basic needs and cope with these difficult times to limit the risk factors that could lead to an increased risk of violence.

Following the seed distribution, we hosted an open Zoom session led by one of himaya's professionals to teach parents and caregivers about the benefits planting can have on their child's growth.

Engaging with nature and observing a seed's growth cycle can increase children's sense of discovery and reasoning.

Children can also become more responsible and discover the value of their plant as they care for it and watch it grow!

 [WATCH MORE HERE.](#)

ADAPTABILITY



COVID-19 RESPONSE

ADAPTABILITY

PREVENTION PROGRAM

COVID-19 RESPONSE

The lockdown and measures imposed by the pandemic have resulted in many challenges for himaya and more precisely, for himaya's Prevention Program when it comes to delivering sessions. This pushed the Prevention Program team to adapt their methods and continue with their mission to prevent, respond or to mitigate the impact of the crisis.

Therefore, the prevention team shifted all of their activities to an online setting, and adapted all the tools and methods to reach the beneficiaries in the safest way possible.

The prevention program started by training its partners, through online sessions provided to community-based organizations (CBOs),

in order to capacitate them with key messages & needed skills to eventually conduct awareness sessions. 30-minutes conference calls were scheduled with caregivers to provide them with necessary information on COVID-19, health and hygiene. Beneficiaries also showed interest in topics such as time management, where they benefited from tips on how to maintain a healthy routine with their families at home.

The topic of self-care was also tackled, to teach parents how important it was to take care of themselves, along with the role of fathers during the lockdown, time management, homeschooling, stigma and discrimination against COVID-19. Internet safety was also a prevalent topic that was addressed during sessions and on social media,

as children were more exposed to the risks presented by the online world, to help caregivers manage their child's screen time, set up parental controls, take protective online measures, and prevent cyber-bullying.

Several videos addressed to parents and children were also developed with the support of himaya's Communications Department, giving out parental tips on how to make the best out of their time at home, while having fun and enjoying some recreational activities that can improve their child's development. Child protection booklets with coloring kits were also distributed to children to help them learn more about child protection topics, while staying entertained.

**AS A RESULT,
HIMAYA RECEIVED
GREAT FEEDBACK,
AS PARENTS
EXPRESSED HOW GRATEFUL
THEY WERE FOR HAVING
SOMEBODY SUPPORT THEM
AT ALL TIMES, & A HOTLINE
WHICH IS ALWAYS AVAILABLE
FOR ANYONE
WHO WISHES TO REPORT
A CASE OF ABUSE,
OR TO RECEIVE
PARENTAL GUIDANCE.**

“We did not feel left out, we felt like someone is always there for us, as a moral support and to help us go through this very tough period of time”

ZN, 32 and Lebanese mother of 2 children, during one of our online parenting sessions in Beirut.

himaya successfully communicated these topics with the public, and shed light on the risks that children might be exposed to as they spend more time at home through social media platforms, live interviews, regional and national media channels. These initiatives reached around 946 thousand people through online channels and over 2.5 million people through offline channels.

ALL THE RESOURCES COULD BE FOUND ON:
www.himaya.org

    @himayaleb



ADAPTABILITY

RESILIENCE PROGRAM

COVID-19 RESPONSE

Following the measures presented by the pandemic, the Resilience Program adjusted the Case Management Process to offer two follow-up modalities: remote follow-up and / or by physical attendance. The team was then capacitated with guidelines on remote case management taking all safety measures into account while adapting to the changes occurring within the community.

The Resilience program also collaborated with the AUB disability hub to shed light on the increased vulnerability among children with disabilities caused by the pandemic; by sharing awareness videos on social justice during Covid-19 and promoting our hotline number to respond to cases of maltreatment identified with children with disabilities.

ADAPTABILITY



LEGAL

COVID-19 RESPONSE

Despite the pandemic and national lockdowns, himaya’s legal department maintained their legal protection intervention response in the Justice Palace in the North while still responding to high-risk cases and coordinating with the General Prosecutor and law enforcement agents and conducting home visits and on-ground follow-up while applying all needed preventive measures.



ALL COMMUNICATIONS MODALITIES WITH THE JUVENILE JUDGE SHIFTED TO A REMOTE COMMUNICATION, TO ENSURE THE CONTINUITY OF THE WORK WITH OUR BENEFICIARIES AND ENSURE THEIR BEST INTEREST.

himaya’s legal unit also continued to coordinate with residential care centers and institutions, to support them in handling emergencies and high-risk situations.

BEIRUT BLAST RESPONSE

ADAPTABILITY

PREVENTION PROGRAM

BEIRUT BLAST RESPONSE

Following the blast that hit Beirut on August 4th 2020, and all the challenges faced by our country, from the pandemic, to the financial crisis, the explosion and its consequences, many children were left disoriented and finding it hard to express and articulate their feelings.

Within 48 hours following the blast, himaya's Prevention Program had created safe spaces around the most affected areas in the city to welcome children and families that have been affected by the incident and were since then present on the field, organizing activities and offering focused psychosocial support, focusing on key messages about conflict and stress management, coping with distress, managing emotions, and more.

Always seeking innovative and interactive ways, himaya's team of facilitators developed the 'Listen' CP Curriculum using music as a tool to teach these children how to speak, listen and think freely.

All activities had one same objective:

Making space for the strong emotions felt by the children who have experienced the blast both directly or indirectly, validating their experience and allowing them to develop a healthy acceptance of their feelings and of their story.

himaya's prevention program also valued making space for the emotional wellbeing of parents and caregivers by developing a 'Self-Care' curriculum addressed specifically for care-takers to protect their mental health and help reduce the impact of stress caused by this year's traumatic events.

Throughout the year, the prevention program beneficiaries were fully engaged in our activities by attending them or by supporting us despite the numerous external factors and events.

READ MORE

[ABOUT HIMAYA'S WORK,
3 MONTHS POST THE BLAST](#)



AS CHALLENGING AS THESE TIMES MIGHT BE FOR EVERYONE IN LEBANON, HIMAYA'S NEVER STOPPED WORKING CLOSELY WITH HUNDREDS OF FAMILIES AND CHILDREN TO PREVENT & MANAGE CASES OF ALL TYPES OF ABUSE, MAKING SURE THAT ALL CHILDREN AND FAMILIES ARE RECEIVING THE SUPPORT THAT THEY NEED IN THESE DIRE TIMES.

ADAPTABILITY

CBRD

THIS YEAR, CBRD, JUST LIKE HIMAYA'S OTHER PROGRAMS & DEPARTMENTS, ALSO HAD TO ADAPT TRAINING MODALITIES AND TECHNIQUES.

35% OF THE TRAINING SESSIONS GIVEN THIS YEAR WERE DONE ONLINE.



IN ADDITION TO THAT, CBRD INTEGRATED NEW CONTENT TO THE TRAINING SESSIONS USUALLY GIVEN:

ONLINE SAFETY

Given the additional risks online since children are now more and more learning remotely.

TRAUMA SENSITIVITY

Dealing with children suffering from emotional distress and/or trauma given the many traumatic events of 2020.

- CBRD trained 80 teachers at Ahliyah staff on Online Safety & Trauma sensitivity
- CBRD also trained 20 Child Protection Officers from 15 schools across Lebanon, in collaboration with Worldvision, on dealing effectively with children in the aftermath of a traumatic event
- CBRD also trained 120 Commissioners from the Lebanese Scouting Federation on how to properly handle situations of children showing signs of trauma

CBRD REACHED OVERALL 829 PARTICIPANTS

ADAPTABILITY

RESILIENCE PROGRAM

BEIRUT BLAST RESPONSE

Following the Beirut blast, and during the first phase of himaya's response, the Resilience program also expanded its scope of services as they were not only providing psycho-social support to children, their parents and caregivers, but were also assessing the needs of the community, to be able to provide them with their most basic needs such as specialized baby food, prescribed baby milk formula, food, medical needs, home equipment, hygiene and educational kits and more.

In coordination with himaya's Communications Department, social workers and psychologists from himaya's Resilience Program went live on TV and on social media to try and put words on what children and caregivers were going through and by normalizing emerging reactions with children.

All in all, the team's remote intervention during national lockdowns proved high adaptability and commitment to the work with families and children.

ADAPTABILITY



SUSTAIN -ABILITY



PREVENTION PROGRAM

CAPACITY BUILDING

- Throughout 2020, himaya’s Prevention Program continued in their mission to not only capacitate the team with new skills and knowledge, but also to work on their attitudes, and on their know-how-to-be in order for them to be able to respond to the fast-changing needs of the community.

- Ongoing capacity building for partners CBO members and safe parks animators & community members who will in turn, deliver remote and on-ground recreational activities for children (including PSEA training) within their communities.

HIMAYA’S PREVENTION PROGRAM KEPT DELIVERING PSYCHOSOCIAL SUPPORT & EDUCATIONAL KITS FOR CHILDREN, TO MAKE SURE THEY ARE PROVIDED WITH THEIR BASIC NEEDS FOR PLAY AND EDUCATION.

INCLUSION

himaya’s prevention program, in collaboration with Sesobel, developed a psychosocial support curriculum (PSS) addressed to children who have mild intellectual deficiencies, as they may be more vulnerable and may not always have the capacity to speak up when facing difficulties.

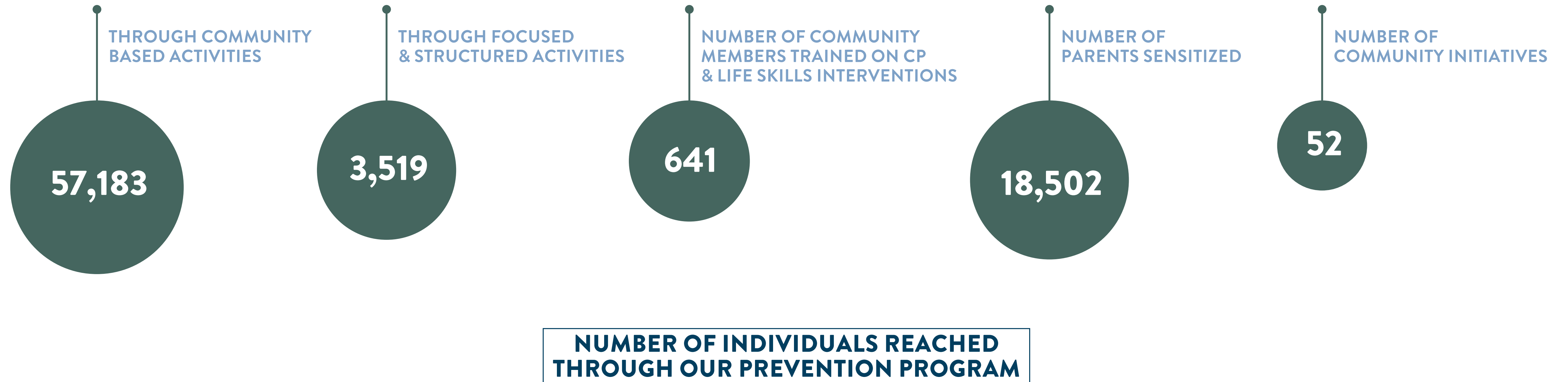
The team conducted a 5 day-training for 15 members from 3 local NGOs (lidad, sesobel and step together), **TO PROVIDE THEIR STAFF MEMBERS WITH SCIENTIFIC INFORMATION ON INTELLECTUAL DEFICIENCIES, FACILITATION SKILLS, GROUP MANAGEMENT TECHNIQUES, AND TO CAPACITATE THEM WITH SKILLS THAT WILL ALLOW THEM TO PROVIDE AWARENESS SESSIONS FOR CHILDREN WITH DISABILITIES.**



SUSTAINABILITY

PREVENTION PROGRAM

NUMBERS



SUSTAINABILITY

CBRD

SUSTAINABLE INITIATIVES & IMPACTFUL PARTNERSHIPS

The strategy of the CBRD department is to promote sustainable initiatives. This means making sure that the knowledge and skills transmitted to professionals through the training sessions provided are institutionalized, especially since most of the training sessions given this year targeted law enforcement or justice professionals, who are not usually sensitized on matters related to child protection.

CBRD, in collaboration with Save the Children Lebanon (SCL), trained 97 General Security (GS) officers from across Lebanon. CBRD also developed a training manual so that GS can take over training initiatives for remaining officers and new recruits. himaya and SCL were also able to make sure that the guidelines shared in the training, related to investigations with children, are introduced in GS regulations through an official circular.

CBRD TRAINED, IN COLLABORATION WITH UNICEF, 106 MUNICIPAL POLICE OFFICERS (MP) ACROSS LEBANON. CBRD IS ALSO WORKING ON MAKING SUCH TRAINING SESSIONS INSTITUTIONALIZED, BY DEVELOPING A TRAINING MANUAL FOR INTERNAL SECURITY FORCES (ISF) OFFICERS. THE MANUAL OFFERS A COMPREHENSIVE OVERVIEW OF CHILD RIGHTS AND CHILD PROTECTION, AS WELL AS FOCUSING SPECIFICALLY ON THE RESPONSIBILITIES OF MP OFFICERS.

SUSTAINABILITY



CBRD has been partnering with the ISF Academy since 2016. This year, CBRD worked with them on a training tool: a video filmed with an investigator, child and social worker demonstrating proper investigation techniques with children.

This tool will be used by trainers in the Academy for training sessions about investigations and working with minors.

CBRD trained, in collaboration with UNICEF and in coordination with the legal department, 21 lawyers from the Bar Association in the North. This is part of a larger partnership and a way to establish linkages between lawyers and himaya's legal unit in the Justice Palace in the North to strengthen child protection practices in the North governorate.

IT'S THE FIRST TIME LAWYERS FROM THE BAR ASSOCIATION ARE TRAINED ON CHILD PROTECTION TOPICS.

In collaboration with Worldvision, CBRD also worked with 15 schools this year on developing and implementing child protection policies. This allows schools to have internal regulations and procedures to help them fulfill their responsibilities regarding child protection. Implementation includes developing a policy document related to child protection, training child protection focal points and school staff on child protection matters.

These trainings reached 222 school staff. CBRD has also trained, through partnerships with UNICEF, Relief International and Solidarités International, and UNRWA non CP actors on safe identification and referral of child abuse cases. The objective of such training sessions is to mainstream CP in other sectors such as Shelter, Education and Health.

CBRD reached 101 non CP actors this year.

RESILIENCE PROGRAM

In spite of all turmoil carried out by this year, the Resilience Program was able to continue providing services throughout the year by responding to cases along with referrals pertained.

During 2020, a total of 2293 new cases were received and assessed on a monthly basis in all offices as our hotlines were highly solicited notably after the Beirut blast.

IT WAS CLEAR THAT OUR MAIN GOAL BY THEN WAS TO PROMOTE OUR HOTLINE AND THE ACCESSIBILITY OF OUR SERVICES TO LET THE COMMUNITY KNOW THAT WE ARE HERE TO SUPPORT.

Social workers and psychologists appeared on live sessions through the Qudwa campaign tackling the responsibility we all have in reporting cases of child abuse while emphasizing on the partnership built with families to overcome the abuse and encourage them to seek support guaranteeing confidentiality and free of judgement.

In the perspective of encouraging reporting, four comic books were also tailored, simulating 4 situations of child abuse (sexual, physical, emotional and neglect, and cyberbullying).

These comic books were addressed to children and caregivers to get the conversation going and relating to the stories in an accessible way while always reverting back to himaya for support if needed.

- The Resilience Team collaborated with ISS partners on 18 cross-border cases (from Germany, UK, Australia, Canada, France, Switzerland, Netherlands, Belgium, and Cyprus). We were able to support 25 children (12 families) with welfare assessment, tracing for biological caregiver, kinship assessment and counselling on obtaining papers.

- Thanks to our UNHCR collaboration and funding, we were able to recommend 4 families out of 13 for inter-country family reunification.

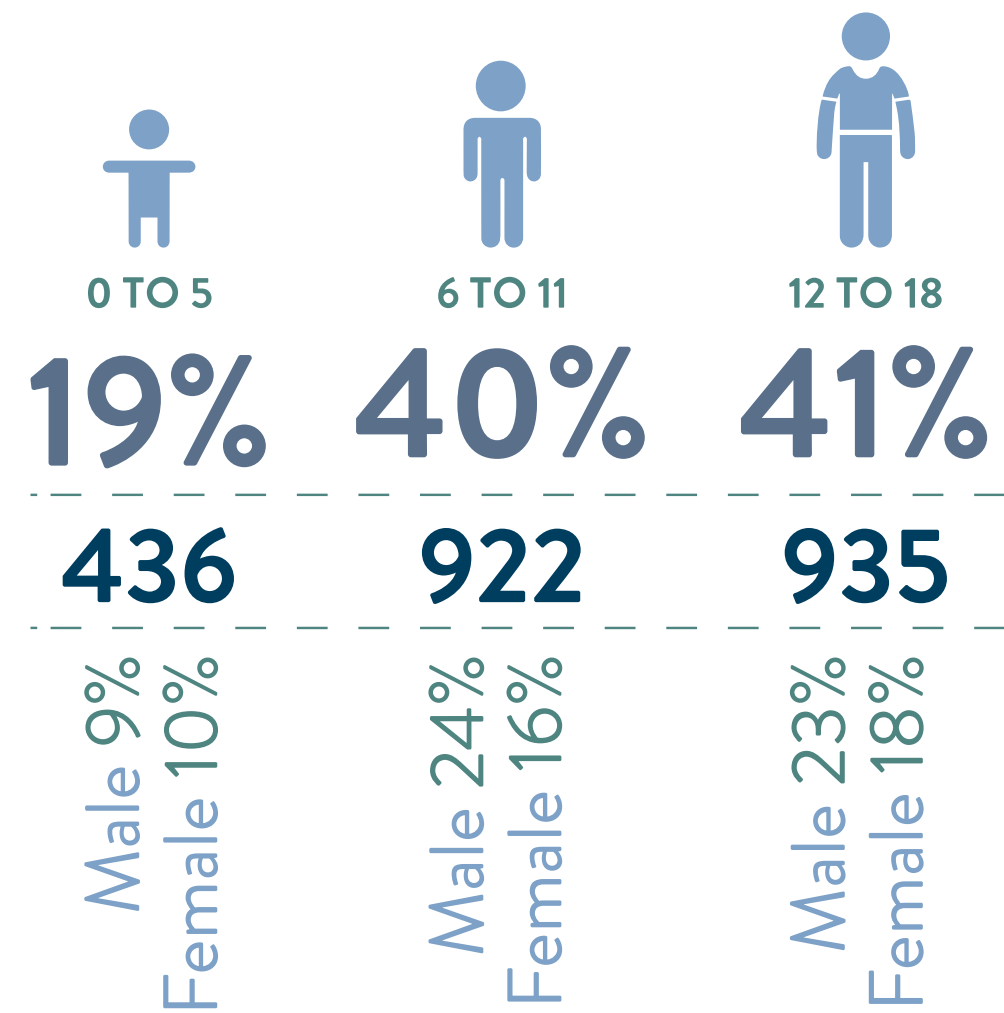
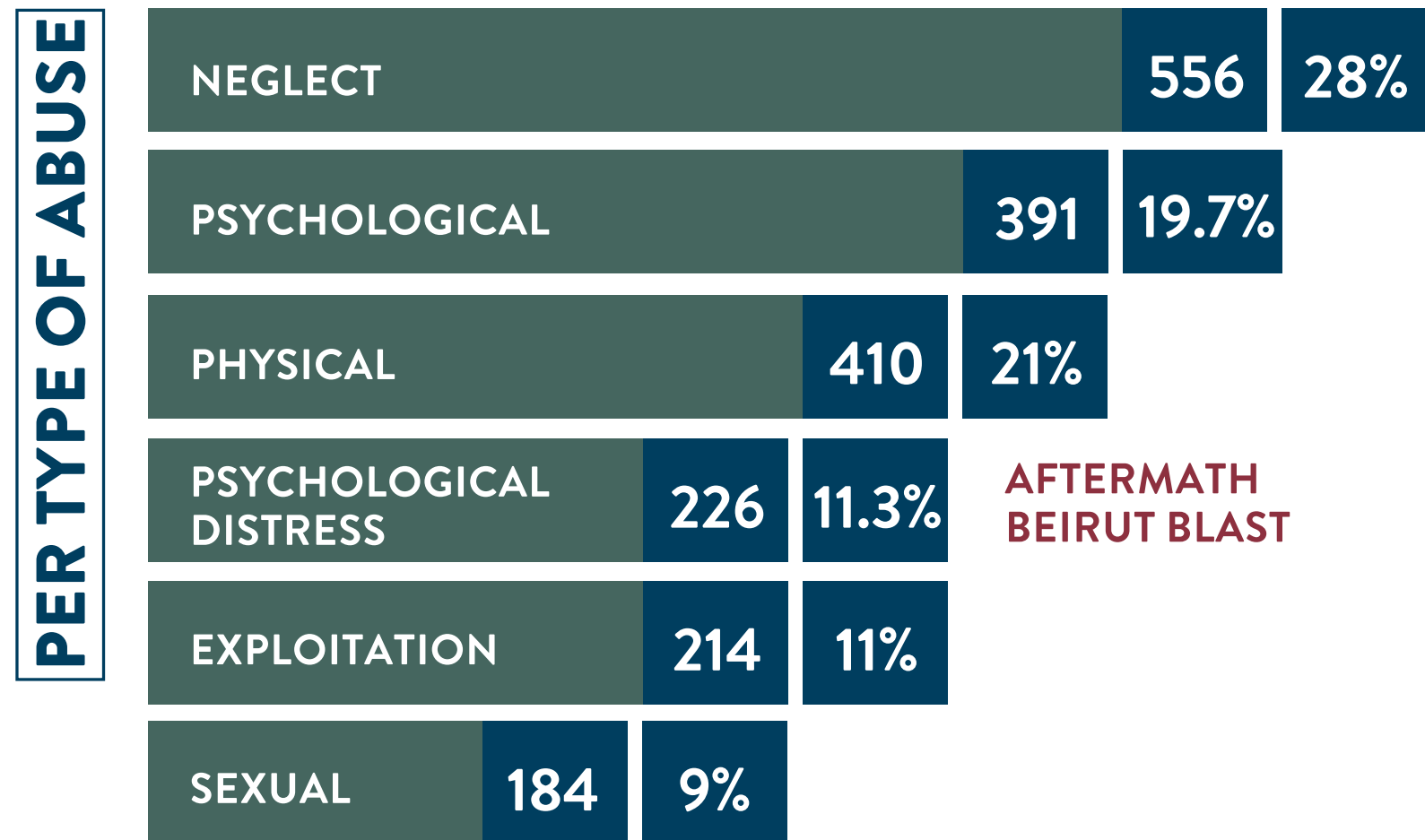


SUSTAINABILITY

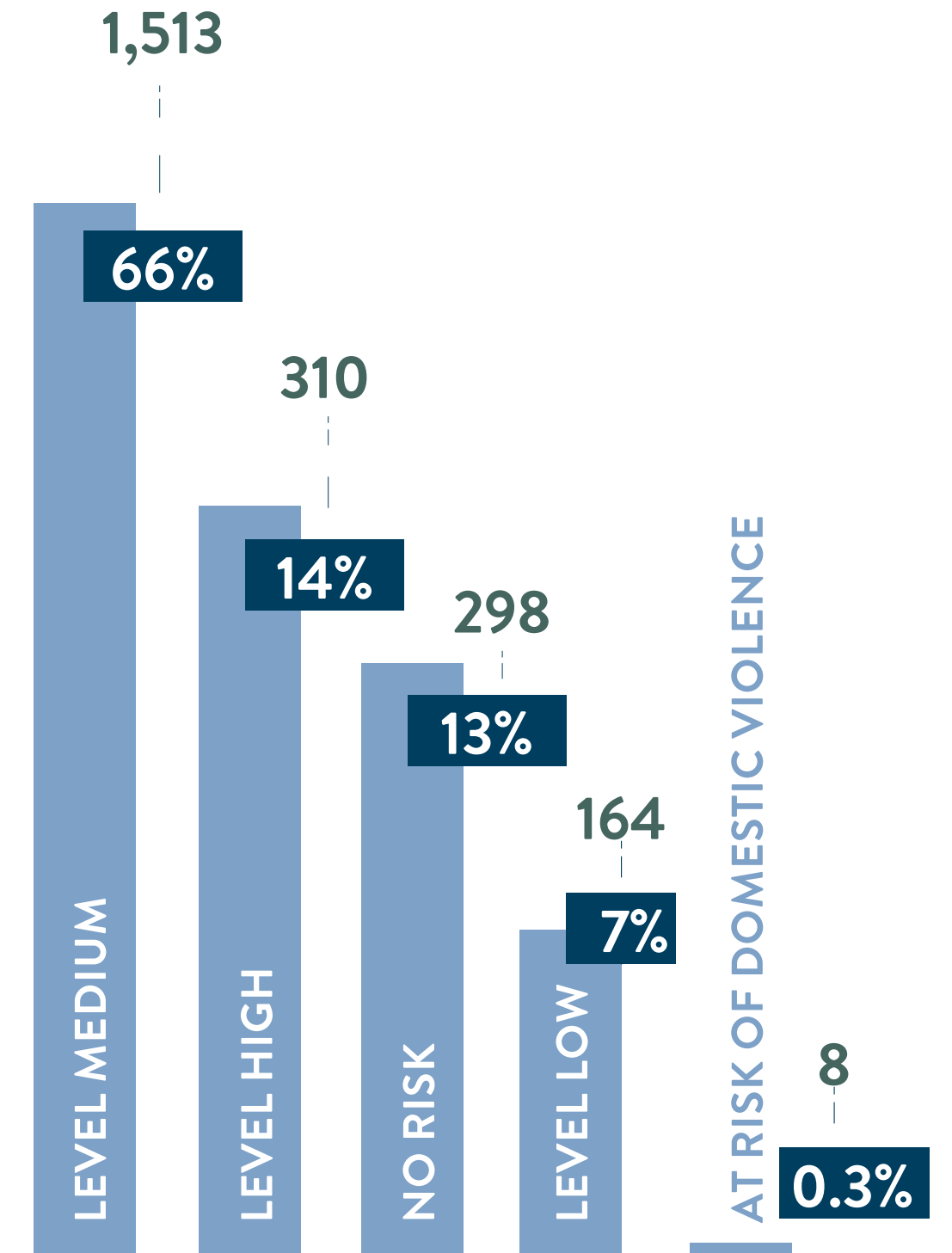
RESILIENCE PROGRAM

NUMBERS

HOME



PER AGE RANGE

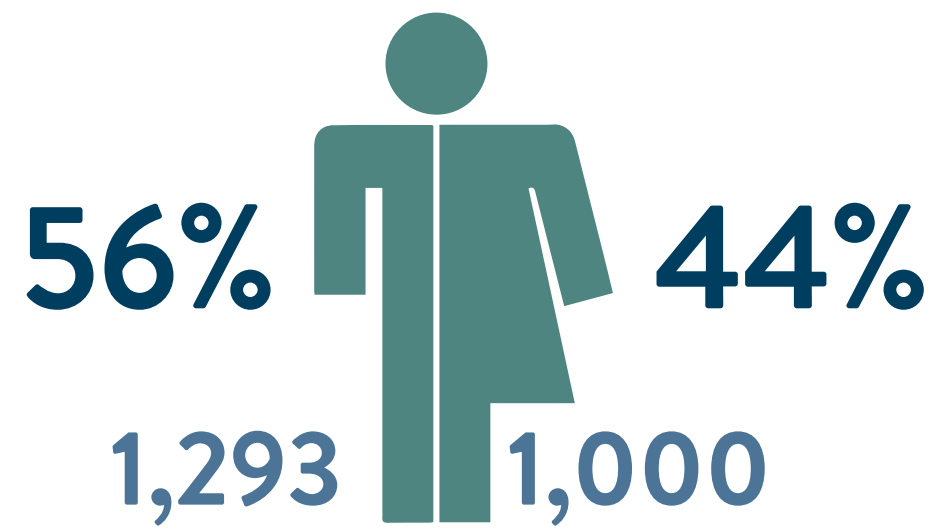


LEVEL OF RISK

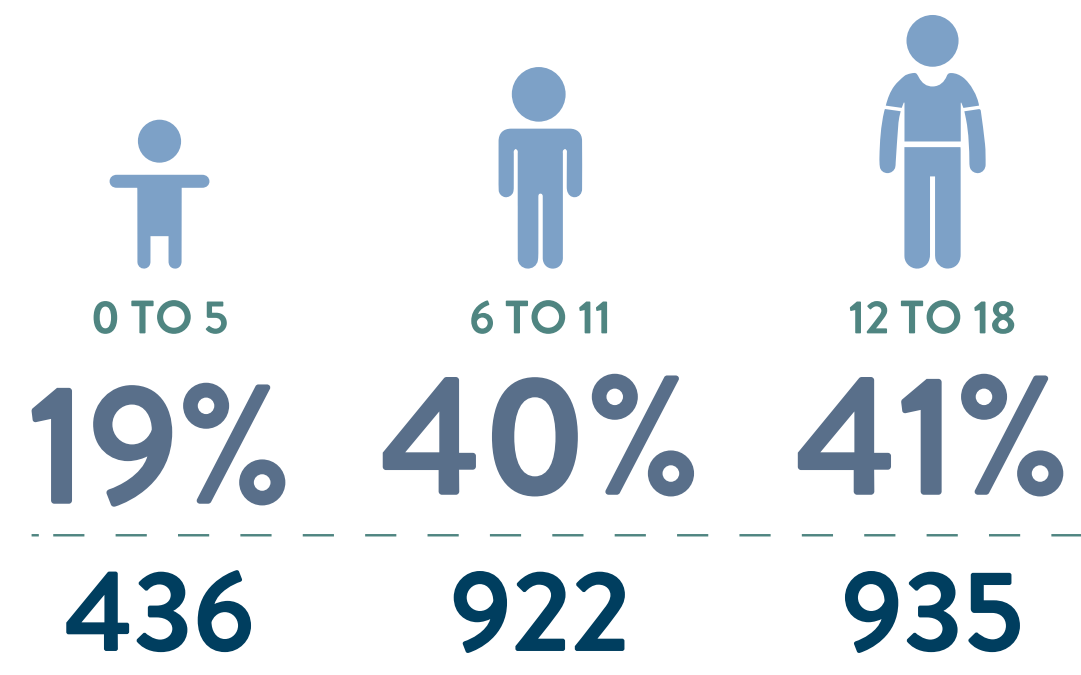
SUSTAINABILITY

RESILIENCE PROGRAM NUMBERS

PER GENDER



PER AGE PER SEX



SUSTAINABILITY

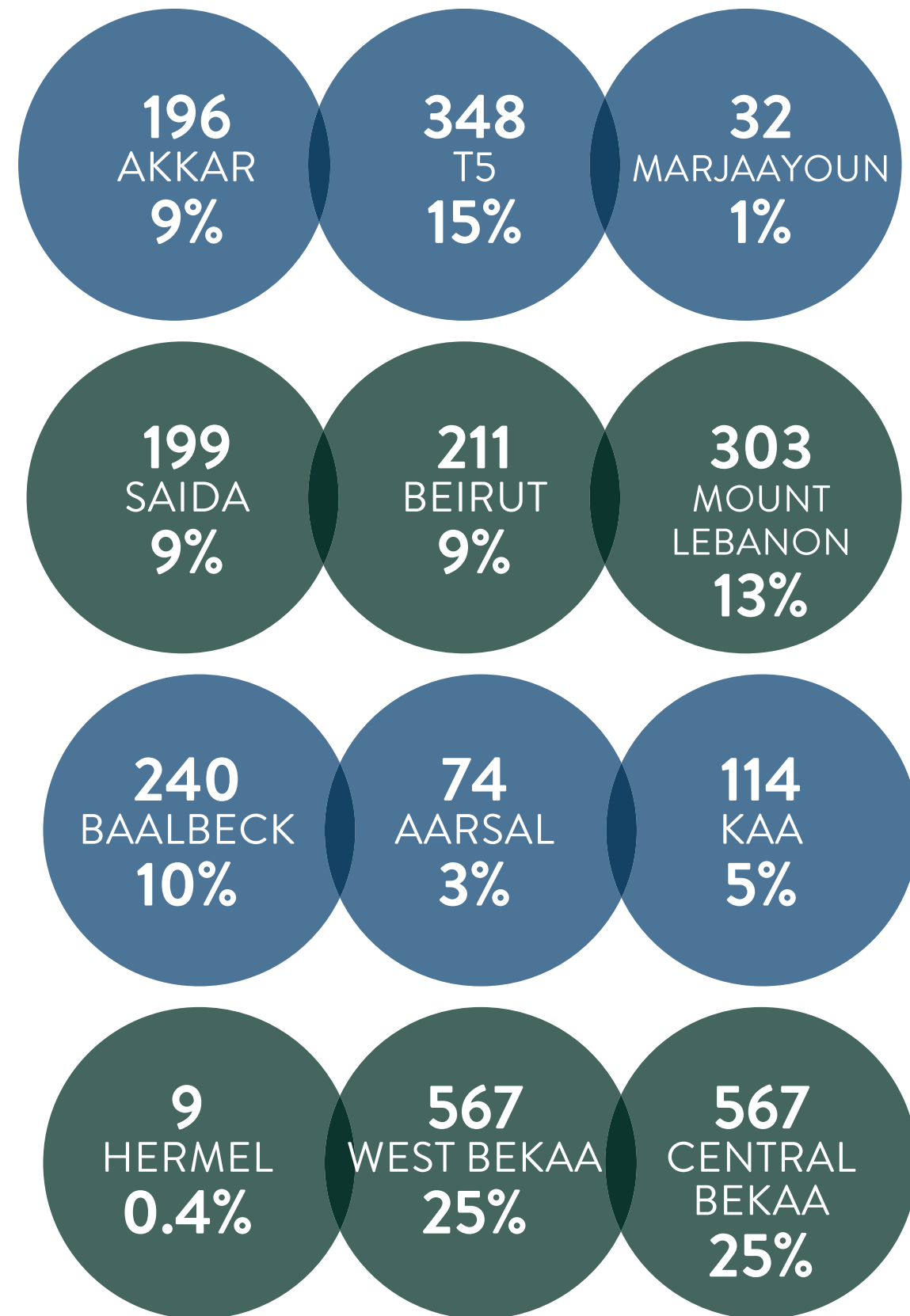
BY SOURCE OF REFERRAL

SOURCE	PERCENT
himaya Team member	226 9.9%
Prevention Team	354 15.0%
Prevention Caregiver	26 1.0%
Prevention CBO	8 0.3%
Citizen	172 7.7%
INGO's	993 43.0%
Local NGO	156 7.0%
Judges and General prosecutor	13 1.0%
MOJ Representative (Ministry of Justice)	21 1.0%
Public School	3 0.1%
MOSA (Ministry of Social Affairs)	9 0.4%
Private Practice Professional	10 0.4%
Residential care	1 0.04%
Specialized Institution	2 0.1%
Hospital	1 0.04%
Municipality	2 0.1%
Media Entity	3 0.1%
UPEL without Judge Assignment	9 0.4%
Beneficiary Himself/Herself	8 0.3%
ISS (International Social Services)	16 0.7%
Member of the family	251 11.0%
Private School not trained on CPP (CPO)	2 0.1%
Private School trained on CPP (CPO)	7 0.3%

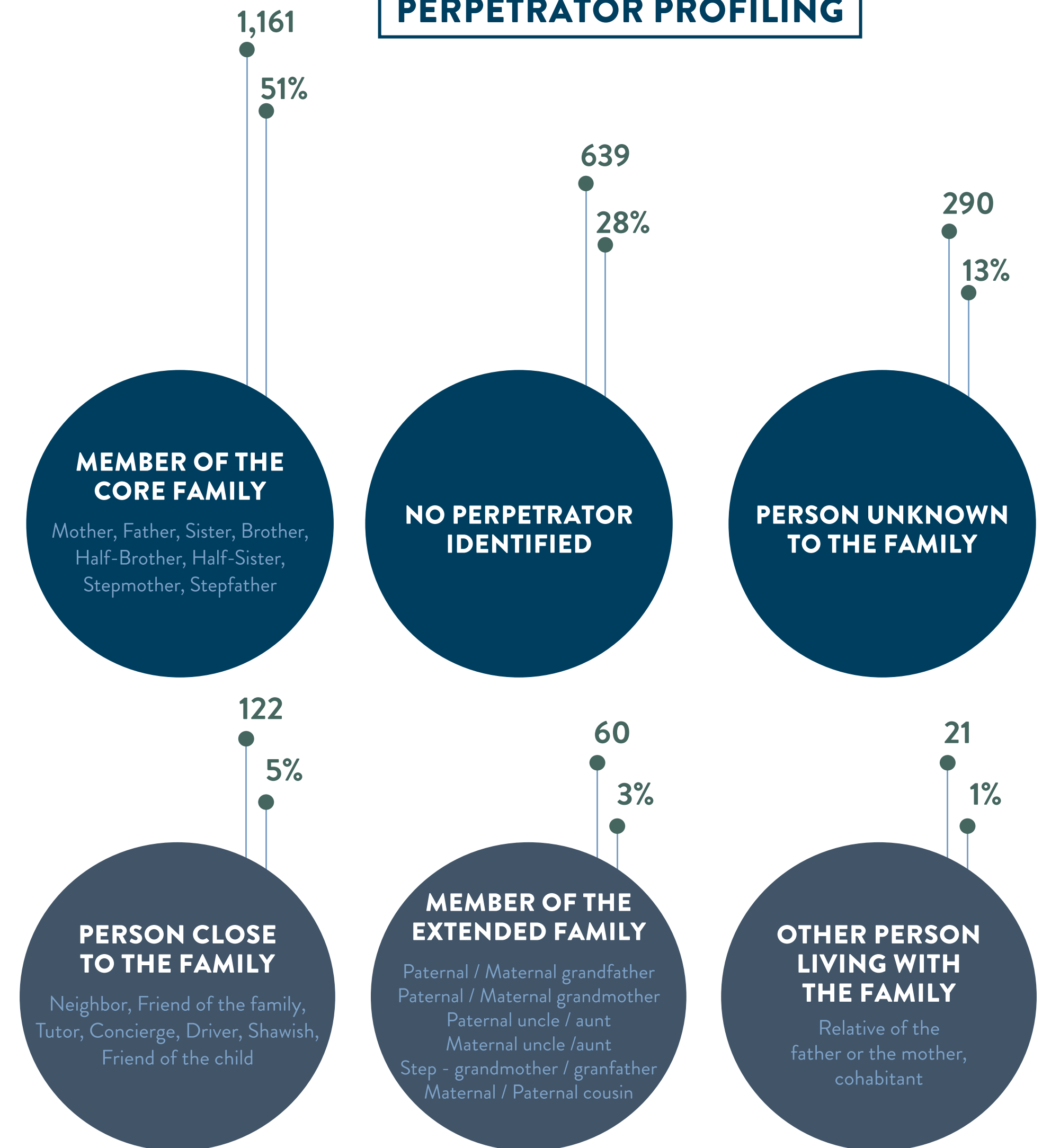
RESILIENCE PROGRAM

NUMBERS

PER REGION



PERPETRATOR PROFILING



SUSTAINABILITY

RESILIENCE PROGRAM

LOOKING AT OUR NUMBERS

Case referral to himaya's resilience program increased this year enabling the teams to reach 2293 cases.

Out of these 2293 cases assessed, 86% of the cases are cases of abuse, segregated as per the following types: neglect 28%, psychological abuse 20%, physical 21%, exploitation 11% and sexual 9% and 11% are cases of psychological distress following the Beirut blast.

In the aftermath of the Beirut explosion, himaya expanded its services to offer psychosocial services to psychologically distressed families and supported 649 children and 474 parents through Psychological First Aid (PFA) out of which 226 children and 207 caregivers did benefit from specialized mental health services.



SIMILAR TO PREVIOUS YEARS, NEGLECT REMAINS THE MOST PROMINENT TYPE OF ABUSE WITNESSED DURING 2020 BY HIMAYA TEAMS AND THIS COULD BE LINKED TO THE EXACERBATION OF THE ECONOMIC SITUATION IN LEBANON AND COVID SITUATION HIGH STRESS IMPLICATIONS.

SUSTAINABILITY

Out of the cases referred to himaya, 56% were boys and 44% were girls.

Physical abuse is massively affecting boys this year since 256 boys were subject to physical abuse vs 152 girls. This could be strongly linked to violent discipline with children remaining at home due to Covid-19 and lockdowns. Neglect impacted boys as well with a higher number than girls: 327 vs 230.

148 cases of exploitation were observed with boys vs 66 with girls, this could be correlated to the increase of children engaged in worst form of child labor due to the socio-economic deterioration in Lebanon. 60% of sexual abuse cases affected are girls whereas 40% affected are boys.

IN SPITE OF COVID-19 AND LOCKDOWNS, OUR TEAMS WERE ABLE TO RESPOND WITHIN 24 TO 48 HOURS TO 310 CASES AT HIGH RISK OF ABUSE THROUGH IN-PERSON INTERVENTION, WHEREAS 1677 CASES REQUIRED NORMAL TRACK INTERVENTION RESORTING TO IN-PERSON AND REMOTE CASE MANAGEMENT.

Thanks to trustful collaboration with the juvenile judges and general prosecutors, the teams were able to ensure protection of 119 cases through the judicial pathway.

In 51% of the cases, the abuse reported is perpetrated by a member of the core family.

This is no different from our data in previous years, which emphasize the importance of partnering closely with caregivers; this would support them in positive parenting in order to cope better with difficulties and struggles specifically amid the lockdown and economic crises that hit the country.

The team was able to respond to 106 children identified with disability and subject to maltreatment. 39% of the children assessed this year were not enrolled in school and deprived from their right of education. Due to challenges linked to access to education, only 41% of these referred children to education were able to access education services effectively.

382 cases of children were engaged in child labor. Looking at children experiencing WFCL, between the displaced population and the host community, we observed a higher engagement by Syrian children, boys, between 6 and 13 years-old.

33 married children were assessed and referred to GBV agencies. What was significant this year is that 2 of the 33 are males and the rest are females which highlights the raise in awareness tackling child marriage regardless of gender.

RESILIENCE PROGRAM

LOOKING AT OUR NUMBERS

Correlation between child abuse and vulnerabilities present in the families this year showcased 14% of children hindered by divorce/separation whereas 4% of cases showcased children's wellbeing was affected by their parents' psychiatric condition.

Out of 2293 cases referred to himaya for case management, 422 cases were received to our hotline, 21 via our e-helpline on our website, 35 were identified via our social media accounts and 132 cases approached our offices in person to seek support.

Building on trustful inter-sectoral collaboration, 50% of the cases were referred from NGOs and INGOs. Internal coordination between himaya's Prevention and Resilience programs resulted in referral of 17% of the cases.

Family members showed trust in himaya by reaching out and self-reporting (11% of cases were referred by members of the family).

1395 CASES OF ABUSE WERE CLOSED, 968 WERE SUCCESSFULLY CLOSED, WITH A SUCCESS RATE OF 69% FOR 2020 FOR THE RESILIENCE PROGRAM; THIS MEANS THAT IN 69% OF THE CASES, CHILDREN WERE PROTECTED, THEIR PARENTS AND SIBLINGS WERE EMPOWERED WITH NEW TECHNIQUES OF UPBRINGING TO PREVENT ABUSE FROM OCCURRING IN THE FUTURE.

DID YOU KNOW?

That in 50 % of child abuse high-risk cases, only 12% needed a judicial pathway for psychosocial support provision to child and caregivers, while the other 38% were supported outside judicial pathway?

FURTHERMORE , THE OTHER 50% (156 OUT OF THE 310) CHILD ABUSE HIGH RISK CASES WERE AT RISK OF SEPARATION FROM THEIR PARENTS, CAREGIVERS, & FOLLOWING HIMAYA'S INTERVENTION, ONLY 43% (67 OUT OF 156) CHILDREN AND THEIR CAREGIVERS BENEFITED FROM PSYCHOSOCIAL SUPPORT OUTSIDE JUDICIAL PATHWAY AND REMAINED WITH THEIR BIOLOGICAL CAREGIVERS, 4% BENEFITED FROM FAMILY-BASED CARE, WHILE ONLY 3.5% WERE PLACED IN RESIDENTIAL CARE OUTSIDE THE JUDICIAL PATHWAY.

To close on this unprecedented and tormented year, we know that we cannot predict or expect usual outcomes, particularly from children who can surprise us in many ways.

Some of the children we are supporting, think of "happy endings" to maltreatment and show resilience. Every child will need time to grief, deal with losses, fear future losses, cry, scream, feel sad, angry, and frustrated, ask questions, bounce back and grow throughout the challenges.



SUSTAINABILITY

LEGAL DEPARTMENT

A NATIONAL STRATEGY/ himaya's legal department participated in the development of the national strategy for frontline response to children separated from their primary caregivers due to COVID-19 (safe identification and referral) alongside Save the Children and UNICEF.

ALTERNATIVE CARE & FAMILY PRESERVATION/ As part of our mission to ensure children's healthy development and welfare, and in line with the alternative care project piloted through our collaboration with UNICEF and funded by LHF, we organized alternative care training for 17 participants from 10 different organizations.

This session was given to parenting program trainers, facilitators and team managers from Akkar and Tripoli on alternative care potential parents outreach methods and on the integration of alternative care components within their curriculum. Other training sessions were also conducted to train 25 members from himaya's prevention team.

Through the training, participants were able to properly introduce the notion of family-based alternative care and promote the foster family culture. They also learned how to detect and refer potential foster caregivers to alternative case management agencies, in order to preserve children's integration in society. To better understand the concept of alternative care, a video was developed with the support of UNICEF, and was screened serving as an outreach tool for potential alternative caregivers.

HIMAYA, THROUGH ITS RESILIENCE PROGRAM AND LEGAL UNIT TEAM, ENSURED A SAFE PLACEMENT WITH FAMILIES FOR 27 CHILDREN THROUGHOUT 2020. WE PROVIDED THEM WITH SUPPORT ON DIFFERENT LEVELS: PSYCHOLOGICAL, SOCIAL, SPECIAL NEEDS, BABY NEEDS, CLOTHING, MEDICAL AND OTHER IN-KIND DONATIONS.

SUSTAINABILITY

DID YOU KNOW?



HIMAYA'S LEGAL PROTECTION UNIT IN THE NORTH HANDLED 417 CASES OF CHILD ABUSE IN THE 2020 ALONE?

209 NEW CASES RECEIVED IN 2020 IN 76% OF THOSE CASES, THE PERPETRATOR WAS A MEMBER OF THE VICTIM'S FAMILY.

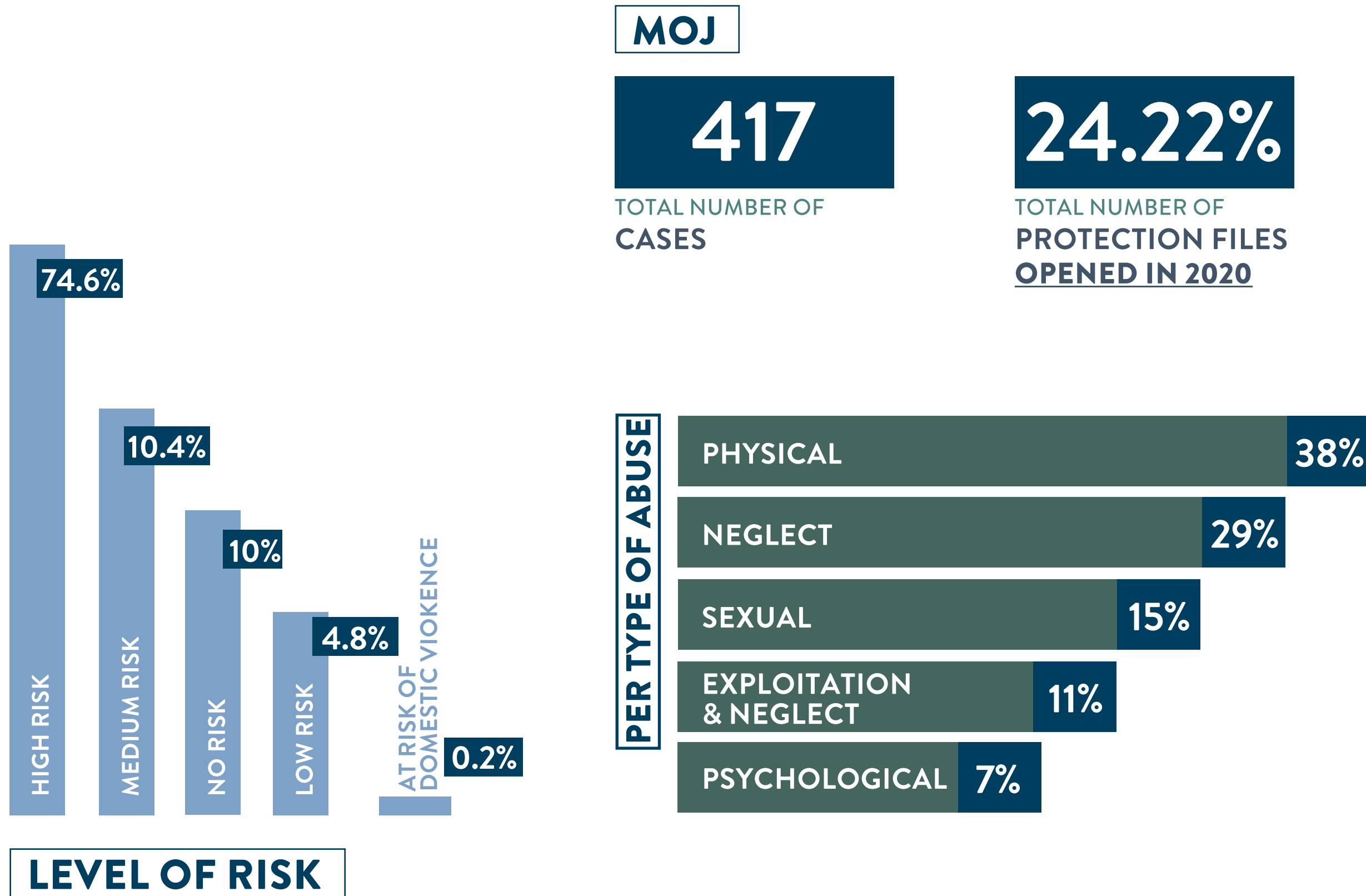
That 46.8% of child abuse high risk cases were at risk of separation from their parents / caregivers?

FOLLOWING THE JUDICIAL DECISION AND HIMAYA'S LEGAL INTERVENTION, FAMILY SEPARATION WAS PREVENTED IN 65.3% OF THE CASES.

34.7% OF THE CHILDREN WERE SEPARATED FROM THEIR PARENTS/ CAREGIVERS, 41.1% BENEFITED FROM FAMILY-BASED PLACEMENTS AND 58.9% WERE PLACED IN RESIDENTIAL CARE (20 CHILDREN OUT OF 34).

LEGAL DEPARTMENT NUMBERS

LEGAL INTERVENTION IN TRIPOLI'S PALACE OF JUSTICE



LEVEL OF RISK

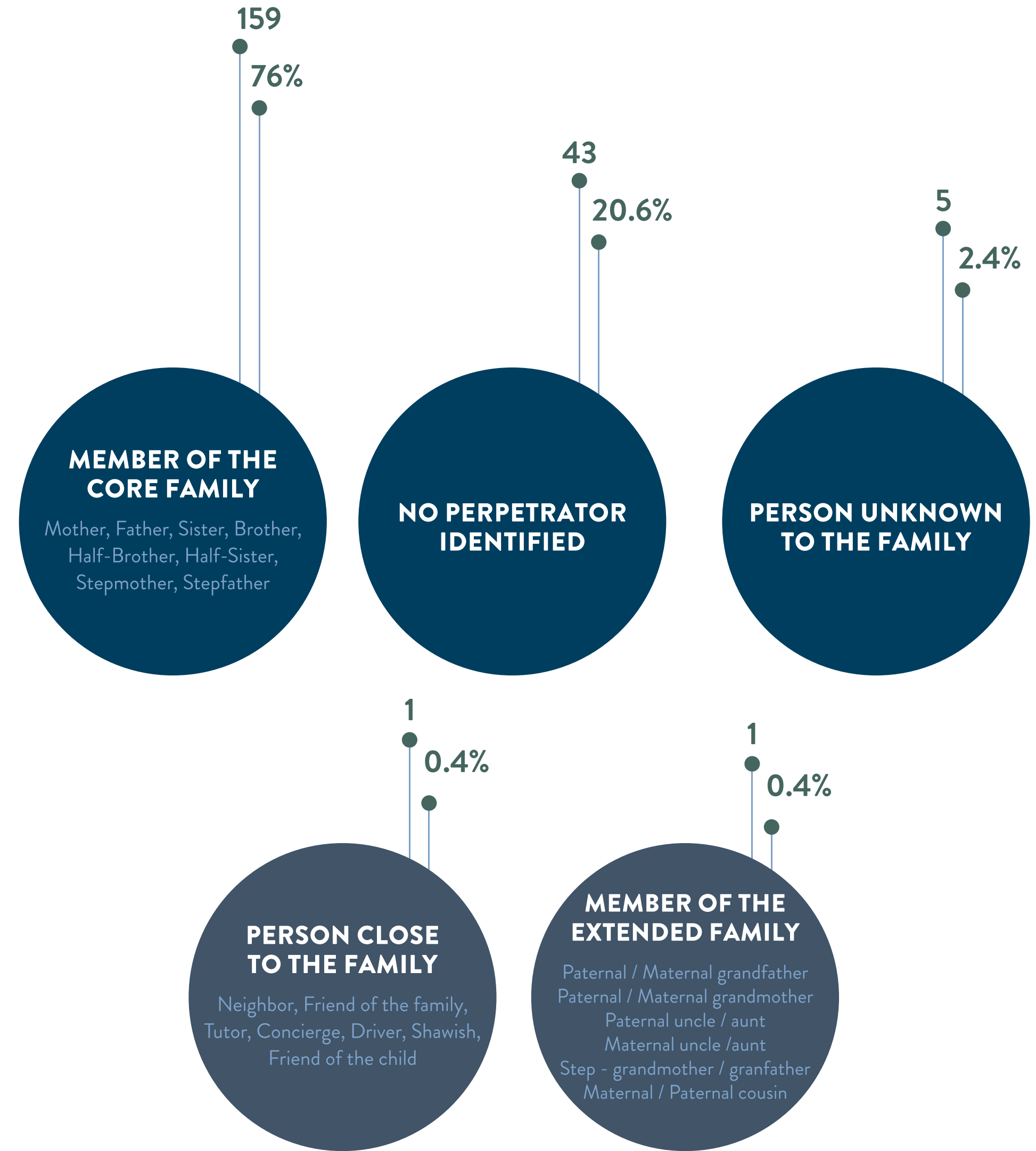
Risk Level	Percentage
HIGH RISK	74.6%
MEDIUM RISK	10.4%
NO RISK	10%
LOW RISK	4.8%
AT RISK OF DOMESTIC VIOLENCE	0.2%

PER TYPE OF ABUSE

Type of Abuse	Percentage
PHYSICAL	38%
NEGLECT	29%
SEXUAL	15%
EXPLOITATION & NEGLECT	11%
PSYCHOLOGICAL	7%

SUSTAINABILITY

PERPETRATOR PROFILING



THE COMMUNICATIONS DEPARTMENT

TARGETING THE MASS AUDIENCE

#IAMQUDWA Hotline Campaign:

Following the Lebanese economic crisis, the COVID-19 pandemic, and the Beirut Port explosion which has had severe psychological and social consequences on both parents and children, himaya, in partnership with UNICEF, and with funding from the Danish government, launched an awareness campaign reminding every citizen of their social responsibility, to report cases of child abuse to the authorities or concerned NGOs.

While it is true that according to a local study conducted in 2008, 1 out of 4 children is a victim of a form of abuse, while 1 out of 6 is a victim of a form of sexual abuse, these numbers are no longer representative, as the Lebanese population has drastically grown throughout these past years, and the true incidence is likely much higher, but has not been communicated due to underreporting.

ALTHOUGH THE PUBLIC OPINION IN THE MENA REGION REFUSES SUCH VIOLENT ACTS AGAINST CHILDREN, IT IS STILL SHY ABOUT TAKING ACTION WHEN NEEDED. GRABBING THE PHONE AND ACTUALLY REPORTING SUSPECTED CHILD ABUSE, CAN BE A DAUNTING TASK ESPECIALLY IN OUR SOCIETY WHERE FAMILY NAMES AND REPUTATION ARE SACREDLY PROTECTED.



SUSTAINABILITY



We needed to encourage individuals to become inspiring and active agents within their communities and become a role model; a QUDWA, leading by example when it comes to protecting children throughout Lebanon.

With that in mind, we launched the campaign through a powerful video, followed by social media posts highlighting the importance of reporting cases of child abuse. The campaign also consisted of a Web-Series broadcasted live on social media every week during which our host Ralph Doumit, along with experts and specialists from himaya as well as social media influencers, tackled the different types of child abuse and answered live questions from viewers and followers.

The campaign also included a “pledge” which reflected the commitment of every citizen to being responsible individuals when it comes to protecting children within their society; The “pledge” is a social media sticker that was used by influencers to reiterate their promise to defend children’s rights and protect them from any form of abuse; thus, urging others to do the same, and in turn, become a QUDWA within their communities as well.

WE WERE ABLE TO REACH 2M+ INDIVIDUALS

THROUGH THIS CAMPAIGN



UNHCR
The UN Refugee Agency



Service social international – Suisse
Internationaler Sozialdienst – Schweiz
Servizio Sociale Internazionale – Svizzera
International Social Service – Switzerland



LHF Lebanon Humanitarian Fund





www.himaya.org

